

# Semantic Heroes

Emma Winkels

Johan Meppelink

Isabelle Pereboom

Omid Azadi

# Research Question

- Lack of new development in psychiatry
- EEG detects moods
- Altering your brainwaves
- Stepwise
- Stimulating Gaming environment

# Set up

- Literature review:
  - Focus on negative effects of gaming
  - No double neurofeedback system
  - Best method: step-wise change from user's state
- Setup:
  - 5 min movie (pictures and music)
  - Minimize external stimuli
  - Emotiv records
  - Webcam at subject's face
- Interpret mood graphs

# Video



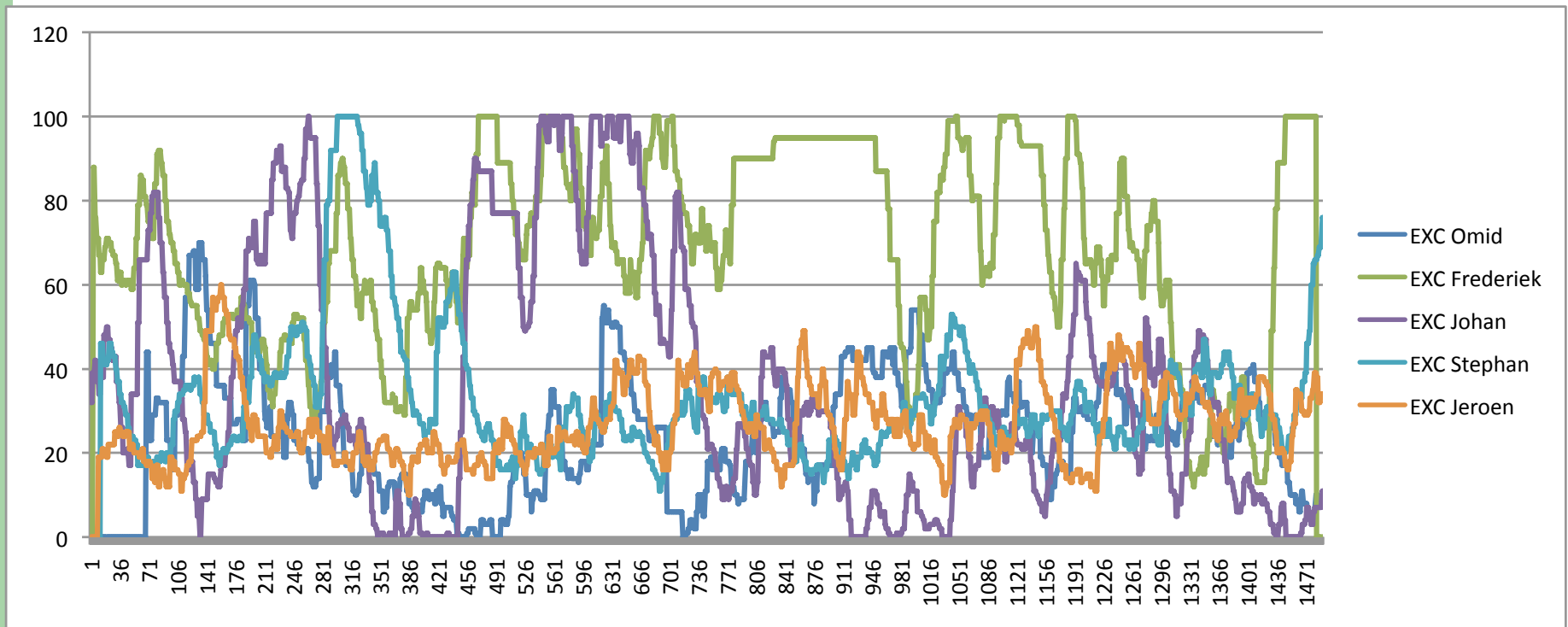
# Results

---

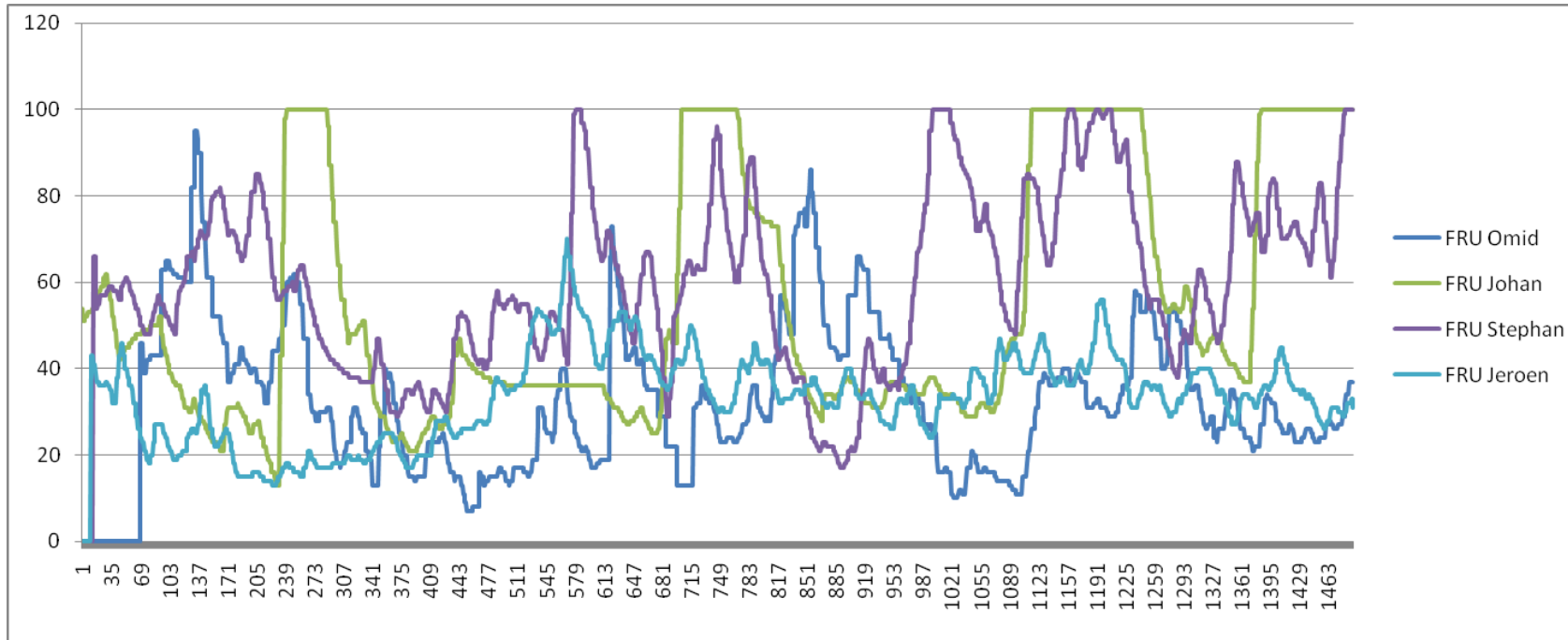
- Synchronizing our data
- Searching patterns

# Results

## ● Patterns?



# Results



# Conclusion

- Could not draw general conclusion.
- Need more research ; more accurate ; more subjects
- Either people do not respond to stimuli as we expected / technological shortcomings.